



KFMC

ANATOMY



Welcome to King Fahad Medical City

Your presence is surely a great pleasure to us
We hope that your visit will be a magnificent addition to KFMC and you





Introduction

In this prosperous era of the reigning Custodian of Two Holy Mosques King Salman bin Abdulaziz, the Ministry of Health is extremely proud of one of its greatest and most exceptional medical achievement – King Fahad Medical City (KFMC). Enjoying the strategic location in the heart of Riyadh City – the capital of Kingdom of Saudi Arabia, King Fahad Medical City is considered the largest and most advanced medical complex in the Middle East with a total capacity of 1200 beds.

This colossal medical facility was built at a cost of 2.3 billion Saudi Riyals and comprises of four hospitals and four medical centers expected to treat more than 50,000 in-patients and over 600,000 outpatients annually.



KFMC is staffed with visionary management and highly qualified professionals sharing a common goal in making King Fahad Medical City a leading tertiary care referral center throughout the region. At all levels of treatment, specialists from many disciplines are brought together to serve patients.

The environment at KFMC skillfully blends zealous people, exemplary care and a commitment to overall quality of life, while offering programs and services through its advocacy and outreach community efforts to improve the patients' quality of life. Extending knowledge and resources into the community is a top priority at KFMC.

In conclusion, the main and overriding objective of the very existence of King Fahad Medical City is to provide every citizen of the Kingdom of Saudi Arabia with the best health care service and to become a bridge between the East and West for information channeling.



A. KFMC Mission:

We are dedicated to providing highly specialized, evidence-based and safe health care, enhanced by education, training and research.

B. KFMC Vision:

To be a benchmark in provision of specialized healthcare.

C. KFMC Values:

1. Respect
2. Compassion
3. Teamwork
4. Honesty
5. Loyalty
6. Accountability





Strategic Objectives

1. Excellence in Patient Experience.
2. Excellence in Training and Research.
3. Best Utilization of Resources.
4. Talent Management.
5. Leading Transformation.



KFMC Fundamentals

Address Patient Needs through:

- Ethics
- Cultural Values
- Industry Quality Standards
- Best Utilization of Resources



KFMC Scope of Service





KFMC History





KFMC Capacity



Specialized Medical Facilities

- 4 Specialized Hospitals
- 3 Specialized Centers of Excellence
- 1 National Institute



Total Bed Capacity
1,200 Beds today

Land lot
500,000 M2 Space





Professional Role

- Clinical Capacity
 - Residency Training Programs
 - Fellowship Training Programs
- Capacity in Health Admin
 - Masters in Health Admin
 - Washington Uni in St. Louis
 - Minnesota University
 - Scholarship Programs
- Capacity in Quality
 - In-House Courses
 - Scholarship Programs

- Capacity in Research
 - Scholarship Programs
 - Research Academy
- Health Care Business Model
 - Business Intelligence Office
 - Utilization
 - Performance Management
- Capacity in HC Engineering
 - Scholarship Programs





Hospitals & Centers of Excellence

1. Main Hospital (MH)
2. Children's Specialized Hospital (CSH)
3. Women Specialized Hospital (WSH)
4. Rehabilitation Hospital (RH)
5. King Salman Heart Center (KSHC)
6. Comprehensive Cancer Center (CCC)
7. Diabetes, Endocrine & Bariatric Center (DEBC)
8. National Neuroscience Institute (NNI)





Main Hospital:

The Main Hospital proudly started operating in 1425 H corresponding to 2004 G. It is a specialized center that provides medical specialties, surgical, critical care and dental services. It also contributes to the health education and teaching at the local level besides enhancing treatment of diseases through medical researches and specialized medical training programs.



Children Specialized Hospital:

Children Specialized Hospital was the first to operate from KFMC, which took place in Rabi II 7th, 1424 corresponding to June 6th, 2003. Since the very beginning, it was one of the biggest hospitals in the region with high level services. Shortly, it held a prominent position among the children's hospitals of public sector. It was designed distinctively so that the children are provided with high level of medical care, in addition to advanced medical facilities that are prepared to fit the needs of children and newborns. It provides various specialized clinical programs and advanced methods of



intensive medical care for this unique category of patients under the supervision of a distinctive team of physicians, nurses and other health sector staff.



Rehabilitation Hospital:

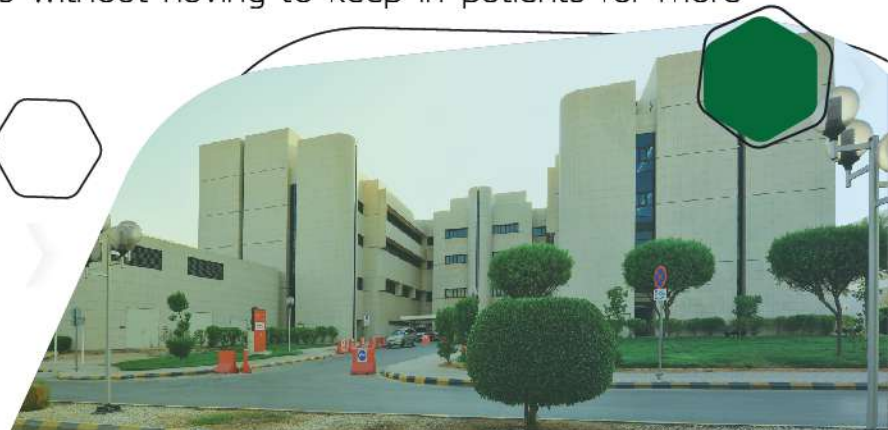
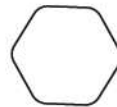
Rehabilitation Hospital was opened in 1425 corresponding to 2004 under the patronage of His Excellency the Minister of Health. It is the first hospital affiliated to the Ministry of Health to provide comprehensive rehabilitation services for newly injured and patients who need rehabilitation treatment from all ages. The hospital is also the first medical institution outside North America to obtain CARF Accreditation, after CARF conducted a full survey of all rehabilitation services over the course of two years. Today, KFMC is a CARF member and officials from Rehabilitation Hospital take part in the assessment of EU and US hospitals. The Hospital's first step towards accomplishing its vision was taking the lead in providing comprehensive rehabilitation services for: Spinal cord injuries; patients with head injuries; stroke patients; cerebral palsy patients; amputees; patients with tumors and cardiovascular disease; patients with motor system injuries; and other disabilities.





Women Specialized Hospital (WSH)

Women Specialized Hospital started operating on Sha'ban 29th, 1424 corresponding to October 26th, 2003. It is one of the KSA specialized tertiary hospitals in the field of obstetrics and gynecology according to the latest international principles and standards. The hospital excels in providing healthcare during high-risk pregnancy and treating infertility and complications of early stages of pregnancy besides providing health care for women. A number specialized clinics have been developed to serve WSH goals to provide specialized services for obstetrics, in addition to the capabilities to perform many surgical operations without having to keep in-patients for more than one day





National Neuroscience Institute (NNI)

NNI started to provide the comprehensive clinical specialist medical care in neuroscience until 1432/04/13 –corresponding to 2011/03/18as a Royal Decree No. (A66) was issued to establish the NNI in a more advanced and developed way in order to be a local benchmark. Today, NNI is in its way towards expansion plans at the level of medial and diagnostic services; modern capabilities and training.





King Salman Heart Center (KSHC)

King Salman Heart Center was established in 1426 H, corresponding to 2005 aiming to provide the highest levels of medical services for heart patients with various conditions and from different ages. It also provides treatment services at a global level for heart patients referred thereto from all over KSA. In October 2005, the first catheterization was performed in KFMC.

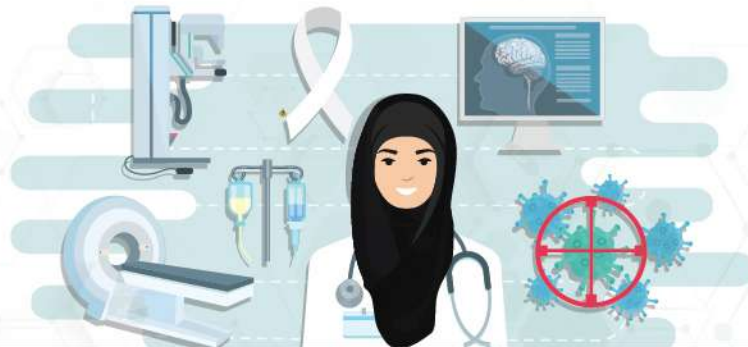




Comprehensive Cancer Center (CCC)

Comprehensive Cancer Center is one of the main references for hematology and oncology patients in the Ministry of Health. It welcomes patients from all parts of KSA for treatment and periodic follow-up. It was established in Jumada II 1425 corresponding to June 2004. The first intravenous chemotherapy was given in Ramadan of the same year.

CCC covers a crucial part of hematology and oncology medicine through providing treatment services in addition to radiation therapy and palliative treatment. CCC also contributes in the development of the cancer national strategy in cooperation with the Ministry of Health.





Obesity, Endocrine and Metabolism Center

The Obesity, Endocrine, and Metabolism Center was established in Jumada II 1425 corresponding to June 2004 under the title of “National Center for Diabetes and Endocrinology”. Its name was changed on 23 Ramadan 1435H corresponding to 20 July 2014 as the center developed and expanded.

The center provides its services for in-patients and out-patients, in addition to consultations and treatment in Obesity, Endocrinology and Metabolism. It plays a preventive role and deals with advanced cases of severe obesity and diabetes in efforts to avoid the development of other diseases.





Academic & Training Services

The establishment of the Executive Administration of Academic and Training Affairs, King Fahad Medical City, dated on 1424/25/12H. Believing that training is the main tool that gives the individual skills to be productive in all levels. The education training and development of our workforce is a sole responsibility of Academic and Training Affairs at King Fahad Medical City. To raise the level with high quality standards of staff and its career and filling of talent in every administration, to work in various fields are the most important needs of each administration, which seeks to achieve. ATA focused on training and in every detail of preparation, study and to present with the latest technology in the training process, and attracted talent and advisory staff to participate in the areas of training, both within the city or outside staff qualification and graduates at the highest scientific and training level and provide solutions and training services to keep up with the administrative and medical renaissance enjoyed by our country now.





KING FAHAD MEDICAL CITY FACILITIES



Social Club:

Social club membership is optional and available to all King Fahad Medical City's personnel and its obtainment requires payment of trivial fee.

Social Club Programs:

- Investment and Marketing
- Solidarity Program and Loans
- Sport Activities
- Cultural Activities
- Nursery Programs

Recreation Facilities:

- Female and Male Gym
- Sports Facilities

Car Services: Special discounts for Social Club gold members.

Leasing and Financing Co.: a company that works in the sector of installment and renting cars. There is also a taxi services available for employees upon request.

Travel Agencies: Special discounts for Social Club gold members.

There are two travel agencies in KFMC that provides you bookings for airline tickets, hotels, cars, activities, cruises and airport transfers, as well as vacation packages.

Housing Compounds:

- On-campus
- Off-campus





KFMC Accreditations

- ISO2005-27001- (Info Safety) 2005
- ISO22000- (Food Safety) 2008
- ISO2008-9001- (Operation) 2010
- CBAHI 2010
- CBAHI Re-Accreditation 2014
- CBAHI ESR 2016
- CBAHI Re-Accreditation 2017
- CARF 2010
- CARF (Re-Acc) 2016
- LEED (Green-Building) 2012
- JCIA 2011
- JCIA (Stroke) 2013
- JCI Academic Medical Center Hospital 2014
- JCIA (Stroke Re-Accreditation) 2016
- JCI Academic Medical Center Hospital 2018

- RAL 2013 2/992
- CT Service ACR 2014
- LAB-NIOM of ABRET 2014
- ECRI Institute Accreditation 2014
- CAP Accreditation 2016
- CHAP 2013
- CHAP Re-Accreditation 2016
- SSH Accreditation 2017
- BFHI External Assessment 2017





KFMC Awards glimpse

| NO | Awards | Year |
|----|--|-----------|
| 01 | Ideal Garden Prize for government institutions | 2008 |
| 02 | Best Health Call Center in the Middle East | 2010 |
| 03 | Quality Respiratory Care Recognition Award | 2010 |
| 04 | AIA Award–US Saudi Infrastructure Summit | 2011 |
| 05 | Best Medical Project Award–Abu Dhabi | 2012–2013 |
| 06 | Best Hospital Design Future | 2012 |
| 07 | The world quality and performance golden award | 2013 |
| 08 | Int. Arch of Europe Award in Quality and Excellence | 2013 |
| 09 | Best international Healthcare Design | 2013 |
| 10 | Accreditation for Sustainable Buildings | 2013 |
| 11 | BID Quality & Prestige Award | 2013 |
| 12 | Quality and Excellence Platinum Compliance Award | 2014 |
| 13 | Other–Ways Platinum Quality & Innovation Award | 2014 |
| 14 | Arabian Hospitals Association | 2015 |
| 15 | Top hospital award in quality improvement and patient safety | 2018 |
| 16 | King Abdul Aziz Quality Award (Bronze Category). | 2018 |
| 17 | International Quality Crown Award (Diamond Category) | 2018 |
| 18 | Best Arab Research Environment Award. | 2018 |





Specialties/Subspecialties

Anesthesia (Pre Anesthesia & Pain Clinic)
Cardiac Surgery
Cardiology
Child Psychiatry
Clinical Genetics & Metabolic Disorders
Clinical Psychology
Community and Family Medicine
Dentistry
Dermatology
Developmental Pediatrics
Endocrinology
Gastroenterology /Hepatology
General Pediatrics
General Surgery
Geriatric Medicine



Hematology /BMT
Head & Neck Surgery
Infectious Disease (Consults)
Internal Medicine
Interventional Cardiology
Interventional
Gastroenterology(ERCP,EUS)
Medical Oncology
Minimally Invasive & Robotic Surgery
Nephrology
Neurology
Obstetrics &Gynecology
Neurosurgery





Ophthalmology
Oral & Maxillofacial Surgery
Orthopedic
Otolaryngology (ENT)
Pediatric Allergy & Immunology
Pediatric Cardiology
Pediatric Cardiac Surgery
Pediatric Dentistry
Pediatric Endocrinology
Pediatric Gastroenterology
Pediatric General Surgery
Pediatric Hematology/Oncology
Pediatric Infectious Disease (Consults)
Pediatric Interventional Cardiology
Pediatric Neurology
Pediatric Neurosurgery
Pediatric Orthopedic/ Spine Surgery
Pediatric Pulmonology

Pediatric Rheumatology
Pediatric Surgery
Pediatric Urology
Pediatrics mental Health
Palliative Care
Physical Medicine & Rehabilitation
Plastic Surgery
Psychiatry
Pulmonology
Spinal Cord Injury Medicine
Radiation Oncology
Rheumatology
Spine Surgery
Surgical Oncology
Thoracic Surgery
Urology
Vascular Surgery





KFMC Electronic Services

- Check on Leave, Assessment, Salary, Medical Guide, Education Center
- Electronic medical file (appointments, medicines, radiology, analysis, medical reports)
- Update personal information
- Application of Tahour (issues and rules, medical fatwas, Anis patient, Muslim child, medical record)
- Request for re-dispense medicine and delivery of medication



تطبيق
iKFMC



تطبيق
طهور
TAHOOR





KFMC Employee information



Total Employee (2018)
≈ **8000**



males
%56



Number of nationalities
52



Females
%44



KFMC

Achievements summary





Sample of KFMC Achievements Throughout The Years

Bone Marrow Transplant:

A bone marrow transplant is a procedure to replace damaged or destroyed bone marrow with healthy bone marrow stem cells.

Tele-Clinic Services:

There are 6 clinics for telemedicine services at KFMC.

Robotic Surgery:

By implementing such an advanced technology, KFMC aims to reduce the complications of bariatric surgery from %8 to %2. MEDU03-. Medulloblastoma Genomic Subgroup-specific Outcomes In Irradiated

Children Above 3 Years Treated At KFMC:

This is the first study in Middle East which highlights the prognostic implications of MB genomic subgroups. Our result was excellent compared to international studies although most of our patients had unfavorable molecular subgrouping.



King Fahad Medical City Invests in High Tech Disinfection Robot to Fight MERS-CoV:

KFMC has purchased 12 cutting edge technology portable disinfection systems to eradicate organisms. The technology kills all infection causing pathogens in the environment, thereby reducing the probability of infections.

Fully Immersive Virtual Reality Gaming System for Upper Limb Stroke Rehabilitation:

The game will require users to perform exercises that are inspired by the rehabilitation therapy techniques. The game module will record data regarding the users' performance into the system's database that can be viewed in a web browser to be accessed remotely by the therapist.

SMC exports healthcare technology for the first time:

The brain tissue bank is designed to store brain tissues obtained from different patients for the development of various therapeutic agents and will serve as the core facility of AVATAR Mouse. After the establishment of the bank is completed, SMC and KFMC will embark on a joint research project involving the AVATAR system and nerve stem cells scheduled to last from 2015 to 2023.





The first Proton therapy center in the Middle East is being built by KFMC:

KFMC has this facility for the first time in Saudi Arabia, for the first time in the Gulf region and for the first time in the Middle East.

KFMC surgeons remove 28 kg tumor from woman's uterus:

A medical team from KFMC successfully conducted hysterectomy procedure on a Saudi woman in her fifties, to remove a uterine tumor weighing 28 kg.

A Unique and a Complicated Operation.. Prosthetic Jaw joint:

The Oral and Maxillofacial Surgery team at KFMC, has succeeded in performing a unique and complicated Surgical replacement of the Temporomandibular joint on a Saudi patient in his thirties, that enabled him to re-open his mouth, talk, move, and practice his normal life after the failure of all previous surgical attempts.





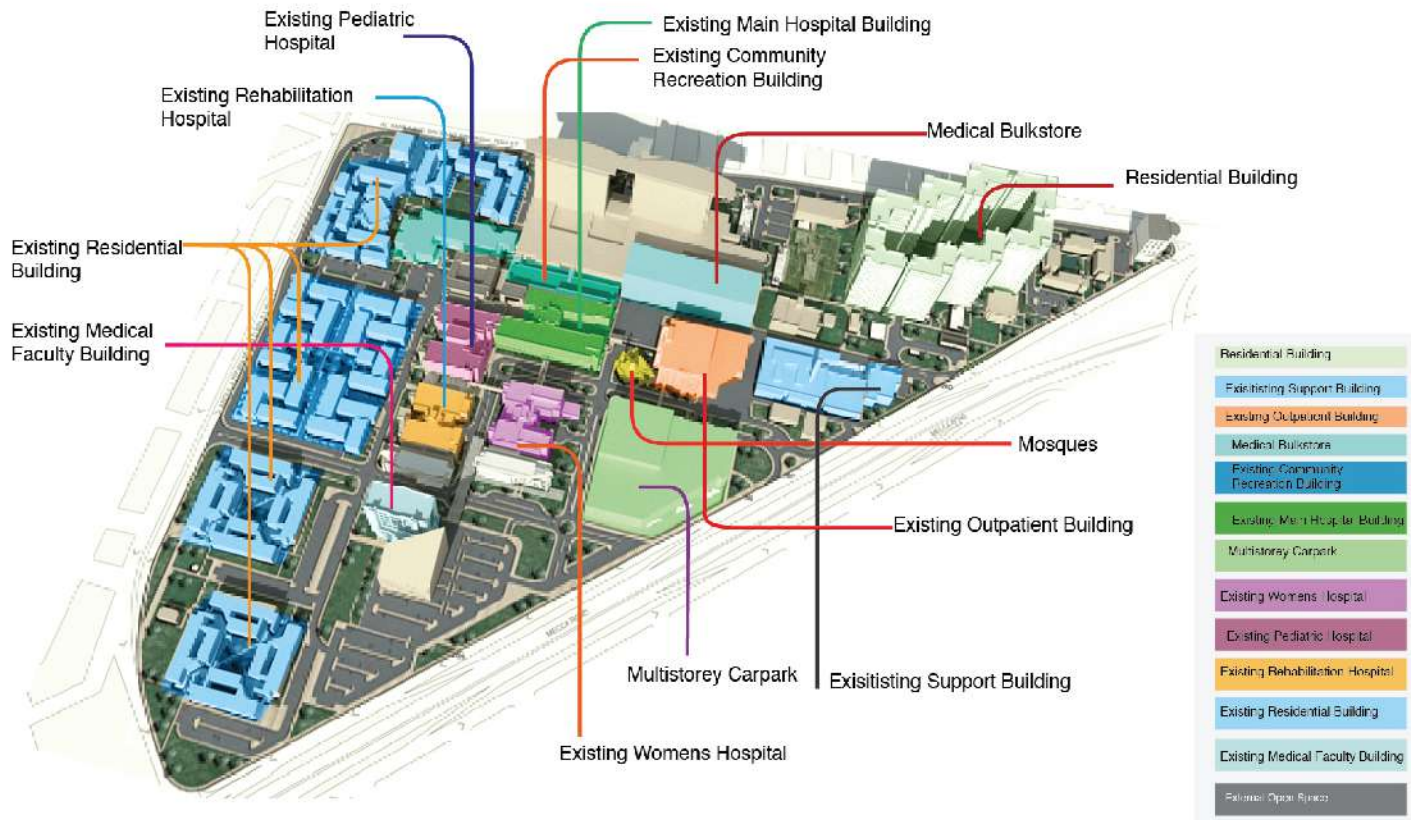
KFMC implanted a Prosthetic Eye and Facial Bones for a Twenty-Year-Old Patient:

The team of Maxillofacial Surgery in King Fahd Medical City managed to implant a prosthetic eye and repair the facial bones for a twenty-year-old patient, in a complicated operation that involved the re-building of the eye socket and the cheek bones and implant special bones around the left side of his face.

KFMC Helps Saudi Arabia's heaviest man sheds half his weight:

The patient, a -22year-old young man, underwent an operation to remove the excess weight and now follows a strict diet and rehabilitation program. He now weighs less than 300 kilograms, down from his starting weight of over 600 kilograms. A special bed and a crane were ordered for him from the United States.





Phones:

Telephone: +966 11 2889999

Fax: +966 11 461 4006

Patient Service:

Telephone: +966 11 2889999 /Ext. 12700

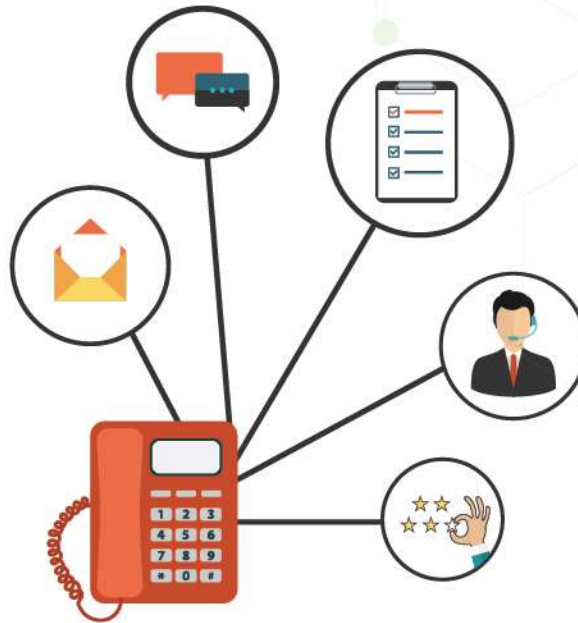
Fax: +966 11 4657160

P.O.BOX:

59046 Riyadh 11525
Kingdom of Saudi Arabia

Toll Free no
8001277000

www.kfmc.med.sa
info@kfmc.med.sa



King Fahad Medical City



kfmc_riyadh



Kfmc Riyadh